

PRODUCT: TFT TOUCH MODULE

MODULE NO.: WKS116FHD001-WCT

SUPPLIER: WKS Technology Co.,LTD

DATE: Oct 15, 2018

SPECIFICATION

Revision: 0.0

WKS116FHD001-WCT

This module uses ROHS material

This specification may change without prior notice in order to improve performance or quality. Please contact WKS R&D department for updated specification and product status before design for this product or release of this order.

<i>WRITTEN BY</i>	<i>CHECKED BY</i>	<i>APPROVED BY</i>
<i>Jason</i>	<i>Eric</i>	<i>Henry</i>

REVISION RECORD

<i>REV NO.</i>	<i>REV DATE</i>	<i>CONTENTS</i>	<i>REMARKS</i>
<i>0.0</i>	<i>2018-10-15</i>	<i>First release</i>	<i>Preliminary</i>

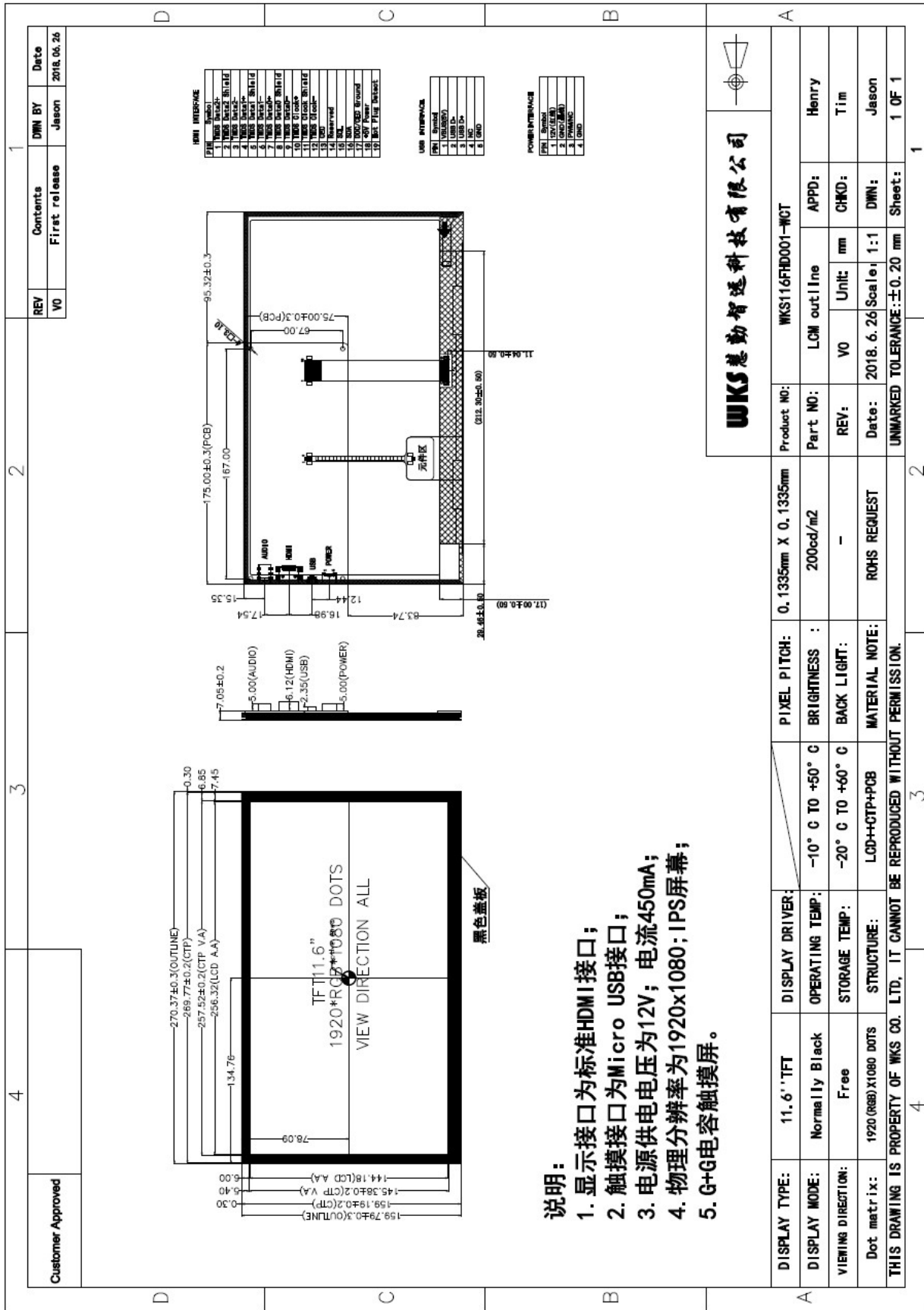
CONTENTS

- 1、 GENERAL INFORMATION**
- 2、 EXTERNAL DIMENSIONS**
- 3、 ABSOLUTE MAXIMUM RATINGS**
- 4、 ELECTRICAL CHARACTERISTICS**
- 5、 CTP CHARACTERISTICS**
- 6、 ELECTRO-OPTICAL CHARACTERISTICS**
- 7、 INTERFACE DESCRIPTION**
- 8、 INPUT TIMING**
- 9、 RELIABILITY TEST CONDITIONS**
- 10、 INSPECTION CRITERION**

1、GENERAL INFORMATION

<i>Item of general information</i>	<i>Contents</i>		<i>Unit</i>
<i>LCD Display Size (Diagonal)</i>	11.6		<i>inch</i>
<i>Module Structure</i>	<i>LCD Display + CTP Touch + PCB</i>		-
<i>LCD Display Type</i>	TFT		-
<i>LCD Display Mode</i>	Normally Black		-
<i>Recommended Viewing Direction</i>	Free		-
<i>Module size (W×H×T)</i>	270.37×159.79×7.05		<i>mm</i>
<i>Active area (W×H)</i>	256.32×144.18		<i>mm</i>
<i>Number of pixels (Resolution)</i>	1920RGB×1080		<i>pixel</i>
<i>Pixel pitch (W×H)</i>	0.1335×0.1335		<i>mm</i>
<i>Color Pixel Arrangement</i>	RGB Stripe		-
<i>Module Interface Type</i>	<i>LCD Display</i>	<i>HDMI interface</i>	-
	<i>CTP</i>	<i>Micro USB interface</i>	-
<i>System Support</i>	<i>Win7/Win8/Win10(Plug and play)</i>		-
	<i>Android/Linux (need to be configured first)</i>		-
<i>Power Supply</i>	<i>External 12V(450mA)</i>		-
<i>Color Numbers</i>	16.7M		-
<i>Backlight Type</i>	<i>White LED</i>		-

2、EXTERNAL DIMENSIONS



3、ABSOLUTE MAXIMUM RATINGS

<i>Parameter of absolute maximum ratings</i>	<i>Symbol</i>	<i>Min</i>	<i>Max</i>	<i>Unit</i>
<i>Operating temperature</i>	<i>Top</i>	<i>-10</i>	<i>60</i>	<i>°C</i>
<i>Storage temperature</i>	<i>Tst</i>	<i>-20</i>	<i>70</i>	<i>°C</i>
<i>Humidity</i>	<i>RH</i>	<i>-</i>	<i>90%(Max 60°C)</i>	<i>RH</i>

Note: Absolute maximum ratings means the product can withstand short-term, not more than 120 hours. If the product is a long time to withstand these conditions, the life time would be shorter.

4、ELECTRICAL CHARACTERISTICS(DC CHARACTERISTICS)

<i>Parameter of DC characteristics</i>	<i>Symbol</i>	<i>Min.</i>	<i>Typ.</i>	<i>Max.</i>	<i>Unit</i>
<i>Supply voltage</i>	<i>Power</i>	<i>9V</i>	<i>12V</i>	<i>16V</i>	<i>V</i>
<i>Supply current</i>	<i>Power</i>	<i>-</i>	<i>450</i>	<i>-</i>	<i>mA</i>
<i>BL PWM signal voltage</i>	<i>V_{PWMH}</i>	<i>1.85</i>	<i>-</i>	<i>3.3</i>	<i>V</i>
	<i>V_{PWML}</i>	<i>0</i>	<i>-</i>	<i>0.7</i>	<i>V</i>
<i>Brightness Control Duty Ratio</i>	<i>Duty</i>	<i>1</i>	<i>-</i>	<i>100</i>	<i>%</i>
<i>Brightness Control pulse width</i>	<i>T_{PWM}</i>	<i>5</i>	<i>-</i>	<i>-</i>	<i>us</i>
<i>Brightness Control frequency</i>	<i>f_{PWM}</i>	<i>200</i>	<i>-</i>	<i>2000</i>	<i>Hz</i>

5、CTP CHARACTERISTICS

<i>Item of CTP characteristics</i>	<i>Specification</i>	<i>Unit</i>	<i>Remark</i>
<i>Panel Type</i>	<i>Glass Cover + Glass Sensor</i>	-	-
<i>Resolution</i>	<i>1920 × 1080</i>	<i>pixel</i>	-
<i>Surface Hardness</i>	<i>6H</i>	-	-
<i>Transparency</i>	<i>≥86%</i>	-	-
<i>Driver IC</i>	-	-	-
<i>Interface Type</i>	<i>Micro USB interface</i>	-	-
<i>Support Points</i>	<i>10(MAX)</i>	-	-
<i>Sampling Rate</i>	<i>20~100</i>	<i>Hz</i>	-
<i>Supply voltage</i>	<i>5</i>	<i>V</i>	-

6、ELECTRO-OPTICAL CHARACTERISTICS

Item of electro-optical characteristics		Symbol	Condition	Min.	Typ.	Max.	Unit	Remark	Note
Response time		$Tr+Tf$	$\theta=0$ $\phi=0$ $Ta=25^{\circ}C$	-	25	-	ms	FIG 1.	4
Contrast Ratio		CR		-	700	-	-	FIG 2.	1
Luminance uniformity		$\delta WHITE$		-	80	-	%	FIG 2.	3
Surface Luminance		Lv		-	200	-	cd/m ²	FIG 2.	2
CIE (x, y) chromaticity	White	White x	$\theta=0$ $\phi=0$ $Ta=25^{\circ}C$	0.283	0.313	0.343	-	FIG 2.	5
		White y	0.299	0.329	0.359				
Viewing angle range	$\phi=90(12\text{ o'clock})$		CR ≥ 10	80	89	-	deg	FIG 3.	6
	$\phi=270(6\text{ o'clock})$			80	89	-	deg		
	$\phi=0(3\text{ o'clock})$			80	89	-	deg		
	$\phi=180(9\text{ o'clock})$			80	89	-	deg		
NTSC ratio		-	-	-	72	-	%	-	-

Note 1. Contrast Ratio(CR) is defined mathematically by the following formula. For more information see FIG 2.:

$$\text{Contrast Ratio(CR)} = \frac{\text{Average Surface Luminance with all white pixels(P1, P2, P3, P4, P5, P6, P7, P8, P9)}}{\text{Average Surface Luminance with all black pixels(P1, P2, P3, P4, P5, P6, P7, P8, P9)}}$$

Note 2. Surface luminance is the LCD surface from the surface with all pixels displaying white. For more information see FIG 2.

$$Lv = \text{Average Surface Luminance with all white pixels (P1, P2, P3, P4, P5, P6, P7, P8, P9)}$$

Note 3. The uniformity in surface luminance ($\delta WHITE$) is determined by measuring luminance at each test position 1 through 9, and then dividing the maximum luminance of 9 points luminance by minimum luminance of 9 points luminance. For more information see FIG 2.

$$\delta_{\text{WHITE}} = \frac{\text{Minimum Surface Luminance with all white pixels (P1, P2, P3, P4, P5, P6, P7, P8, P9)}}{\text{Maximum Surface Luminance with all white pixels (P1, P2, P3, P4, P5, P6, P7, P8, P9)}}$$

Note 4. The response time is defined as the LCD optical switching time interval between “White” state and “Black” state. Rise time (T_{ON}) is the time between photo detector output intensity changed from 90% to 10%. And fall time (T_{OFF}) is the time between photo detector output intensity changed from 10% to 90%. For more information see FIG 1.

Note 5. CIE (x, y) chromaticity, The x,y value is determined by screen active area position 5. For more information see FIG 2.

Note 6. Viewing angle is the angle at which the contrast ratio is greater than a specific value. For TFT module, the specific value of contrast ratio is 10. The angles are determined for the horizontal or x axis and the vertical or y axis with respect to the z axis which is normal to the LCD surface. For more information see FIG 3.

Note 7. For Viewing angle and response time testing, the testing data is base on Autronic-Melchers’s ConoScope. Series Instruments. For contrast ratio, Surface Luminance, Luminance uniformity and CIE, the testing data is base on BM-7 photo detector.

Note 8. For TN type TFT transmissive module, Gray scale reverse occurs in the direction of panel viewing angle.

FIG.1. The definition of Response Time

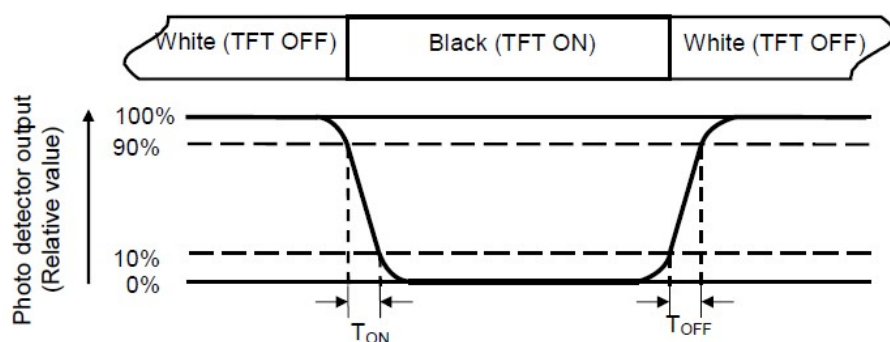


FIG.2. Measuring method for Contrast ratio, surface luminance, Luminance uniformity,

CIE (x, y) chromaticity

A : H/6 ;

B : V/6 ;

H,V : Active Area(AA) size

Measurement instrument: BM-7; Light spot size=5mm, 350mm distance from the LCD surface to detector lens.

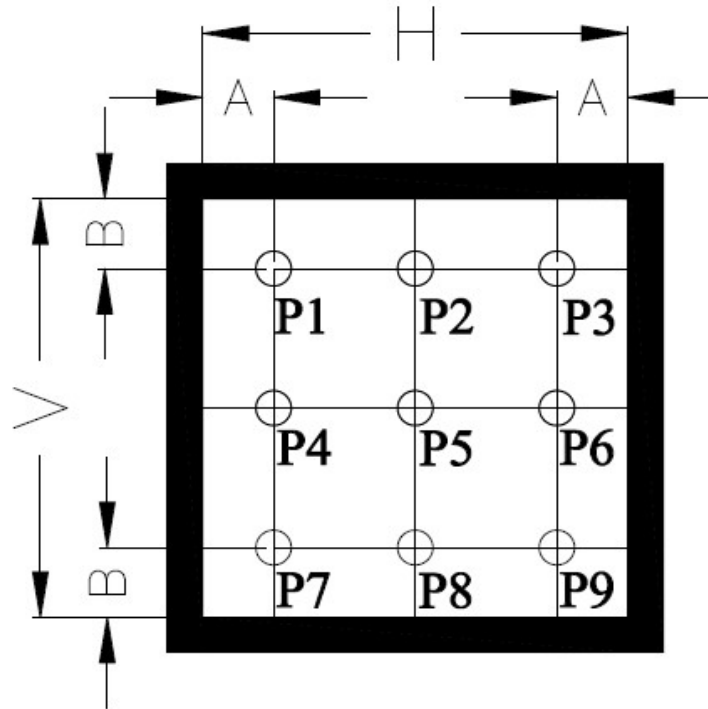
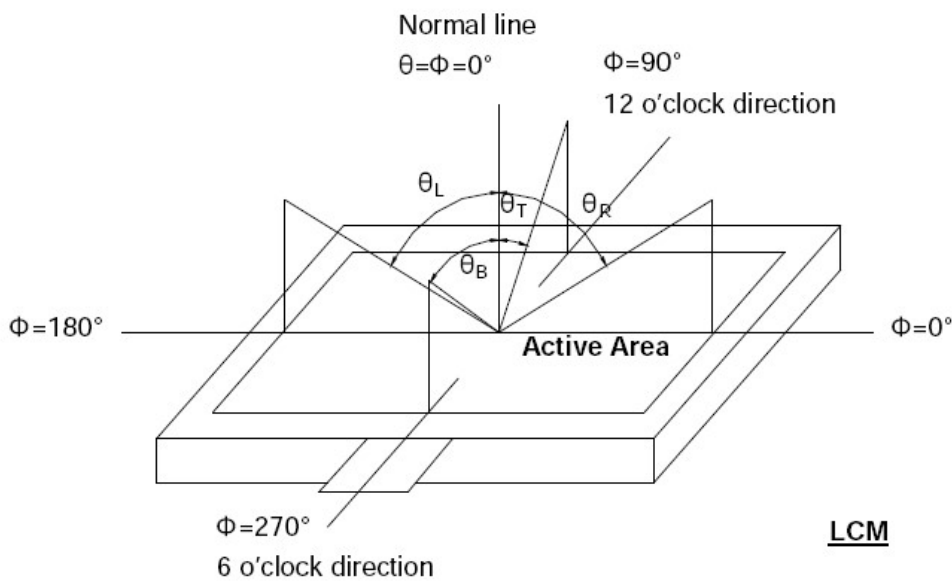


FIG.3. The definition of viewing angle



7、INTERFACE DESCRIPTION

A、HDMI Interface Description

NO.	Symbol	DESCRIPTION
1	TMDS Data2+	Positive side of channel 2 TMDS low-voltage signal differential input pair
2	TMDS Data2 Shield	Ground
3	TMDS Data2-	Negative side of channel 2 TMDS low-voltage signal differential input pair
4	TMDS Data1+	Positive side of channel 1 TMDS low-voltage signal differential input pair
5	TMDS Data1 Shield	Ground
6	TMDS Data1-	Negative side of channel 1 TMDS low-voltage signal differential input pair
7	TMDS Data0+	Positive side of channel 0 TMDS low-voltage signal differential input pair
8	TMDS Data0 Shield	Ground
9	TMDS Data0-	Negative side of channel 0 TMDS low-voltage signal differential input pair
10	TMDS Clock+	Positive side of reference clock. TMDS low-voltage signal differential input pair
11	TMDS Clock Shield	Ground
12	TMDS Clock-	Negative side of reference clock. TMDS low-voltage signal differential input pair
13	CEC	No Connection
14	Reserved(N.C.)	No Connection
15	SCL	DDC SCL
16	SDA	DDC SDA
17	DDC/CEC Ground	Ground
18	+5V Power	+5V Power
19	Hot Plug Detect	Hot Plug Detect

B、USB TOUCH Interface Description

NO.	Symbol	DESCRIPTION
1	VUSB	USB Power
2	D-	USB Data-
3	D+	USB Data+
4	NC	No connection
5	GND	Power Ground

C、External POWER Interface Description

NO.	Symbol	DESCRIPTION
1	9V~16V	External power input(9V~16V)
2	GND	Power Ground
3	PWM/NC	Brightness Control input signal(200~2000Hz)
4	GND	Power Ground

8、LCD TIMING

Parameter	Symbol	Value			Unit
		Min.	Typ.	Max.	
DCLK frequency@ Frame rate=60Hz	DCLK	-	138.5	-	MHz
Horizontal display area	thd	1920			DCLK
1 Horizontal Line	th	-	2080	-	DCLK
HSYNC pulse width	thpw	-	-	-	DCLK
HSYNC Back Porch(Blanking)	thb	-	-	-	DCLK
HSYNC Front Porch	thfp	-	-	-	DCLK
Vertical display area	tvd	1080			H
VSYNC period time	tv	-	1111	-	H
VSYNC pulse width	tvpw	-	-	-	H
VSYNC Back Porch(Blanking)	tvb	-	-	-	H
VSYNC Front Porch	tvfp	-	-	-	H

9、RELIABILITY TEST CONDITIONS

No.	Test Item	Test Condition
1	High Temperature Storage	70°C/120 hours
2	Low Temperature Storage	-20°C/120 hours
3	High Temperature Operating	60°C/120 hours
4	Low Temperature Operating	-10°C/120 hours
5	Temperature Cycle Storage	-10°C(30min.)~25(5min.)~60°C(30min.)×10cycles

A、Inspection after test:

Inspection after 2~4 hours storage at room temperature, the sample shall be free from defects:

- Air bubble in the LCD;
- Sealleak;
- Non-display;
- Missing segments;
- Glass crack;
- Current is twice higher than initial value.

B、Remark:

- The test samples should be applied to only one test item.
- Sample size for each test item is 5~10pcs.
- Failure Judgment Criterion: Basic Specification, Electrical Characteristic, Mechanical Characteristic, Optical Characteristic.

10、INSPECTION CRITERION

This specification is made to be used as the standard of acceptance/rejection criteria for TFT-LCD/IPS TFT-LCD module product, and this specification is applicable only in the case that the size of module equal to or exceed than 4.3 inch.

10.1 Sample plan

Sampling plan according to GB/T2828.1-2003/ISO 2859-1: 1999 and ANSI/ASQC

Z1.4-1993,normal level 2 and based on:

Major defect: AQL 0.65

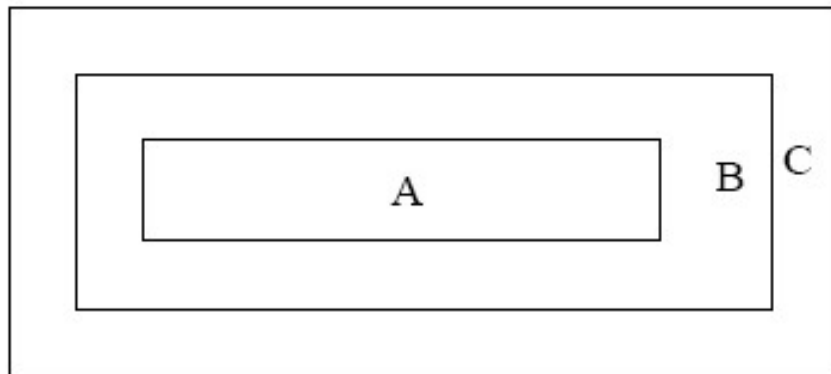
Minor defect: AQL 1.5

10.2 Inspection condition

Viewing distance for cosmetic inspection is about 30cm with bare eyes, and under an environment of 20~40W light intensity, all directions for inspecting the sample should be within 45° against perpendicular line. (Normal temperature 20~25 °C and normal humidity 60 ±15%RH)

10.3 Definition of Inspection Item.

A、 Definition of inspection zone in LCD.



Zone A: character/Digit area

Zone B: viewing area except Zone A (Zone A + Zone B=minimum Viewing area)

Zone C: Outside viewing area (invisible area after assembly in customer's product)

Fig.1 Inspection zones in an LCD

Note: As a general rule, visual defects in Zone C are permissible, when it is no trouble for quality and assembly of customer's product.

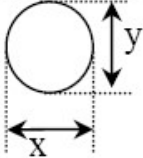
B、 Definition of some visual defect

<i>Bright dot</i>	<i>Because of losing all or part function, bad pixel dots appear bright and the size is more than 50% of one dot in which LCD panel is displaying under black pattern.</i>
<i>Dark dot</i>	<i>Dots appear dark and unchanged in size in which LCD panel is displaying under pure red, green, blue picture, or pure whiter picture.</i>

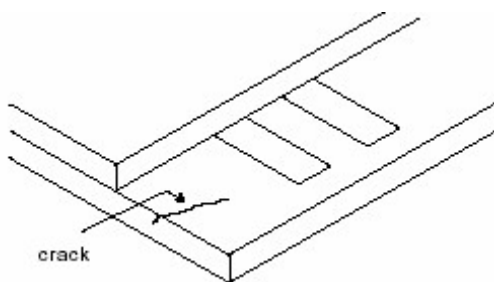
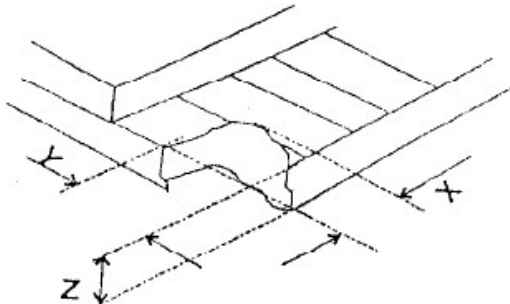
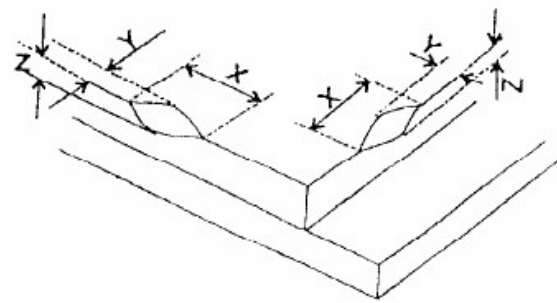
10.4 Major Defect

Item No.	Items to be inspected	Inspection standard	Classification of defects
1	Functional defects	1) No display 2) Display abnormally 3) Missing vertical, horizontal segment 4) Short circuit 5) Excess power consumption 6) Backlight no lighting, flickering and abnormal lighting	major
2	Missing	Missing component	
3	Outline dimension	Overall outline dimension beyond the drawing is not allowed	

10.5、Minor Defect

Item No.	Items to be inspected	Inspection standard					Classification of defects
1	Bright dot /dark dot defect	Zone		Acceptable Qty			Minor
				A+B			
		4.3" ~ 7"	7~10.1"	>10.1"			
Bright pixel dot		1	2	3	Acceptable		
Dark pixel dot		4	4	4			
2bright dots adjacent		0	0	0			
2dark dots adjacent		0	0	0			
Total bright and dark dots		5	6	7			
<p>Note: Minimum distance between defective dots is more than 5mm; Pixel dots' function is normal, but bright dots caused by foreign material and other reasons are judged by the dot defect of 5.2.</p>							
2	<p>Dot defect</p>  <p>$\Phi = (x+y) / 2$</p>	Zone		Acceptable Qty			Minor
Size(mm)				A+B			
$\Phi \leq 0.2$		Acceptable	Acceptable	Acceptable	Acceptable		
$0.2 < \Phi \leq 0.5$		4	5	6			
$\Phi > 0.5$		0	0	0			
<p>Note: 1. Minimum distance between defective dots is more than 5 mm; 2. The quantity of defect is zero in operating condition.</p>							
3	Linear defect	Zone		Acceptable Qty			Minor
Size (mm)				A+B			
Length		4.3" ~7"	7~10.1"	>10.1"			
Ignore		$W \leq 0.05$	Acceptable	Acceptable	Acceptable		
$L \leq 5.0$		$0.05 < W \leq 0.1$	4	5		6	
$L > 5.0$		$W > 0.1$	0	0		0	

4	Polarizer defect	<p>5.4.1 Polarizer Position</p> <p>(i) Shifting in position should not exceed the glass outline dimension.</p> <p>(ii) Incomplete covering of the viewing area due to shifting is not allowed.</p> <p>5.4.2 Dirt on polarizer</p> <p>Dirt which can be wiped easily should be acceptable.</p> <p>5.4.3 Polarizer Dent & Air bubble</p> <table border="1"> <thead> <tr> <th colspan="2" rowspan="2">Zone</th> <th colspan="3">Acceptable Qty</th> <th rowspan="2">C</th> </tr> <tr> <th colspan="3">A+B</th> </tr> <tr> <th rowspan="2">Size(mm)</th> <th rowspan="2"></th> <th>4.3"~7"</th> <th>7~10.1"</th> <th>>10.1"</th> <th rowspan="2">Acceptable</th> </tr> </thead> <tbody> <tr> <td>$\Phi \leq 0.2$</td> <td></td> <td>Acceptable</td> <td>Acceptable</td> <td>Acceptable</td> </tr> <tr> <td>$0.2 < \Phi \leq 0.5$</td> <td></td> <td>4</td> <td>5</td> <td>6</td> </tr> <tr> <td>$\Phi > 0.5$</td> <td></td> <td>0</td> <td>0</td> <td>0</td> </tr> </tbody> </table> <p>5.4.4 Polarizer scratch</p> <p>(i) If the polarizer scratch can be seen after cover assembling or in the operating condition, judge by the linear defect of 5.3.</p> <p>(ii) If the polarizer scratch can be seen only in non-operating condition or some special angle, judge by the following:</p> <table border="1"> <thead> <tr> <th colspan="2" rowspan="2">Zone</th> <th colspan="3">Acceptable Qty</th> <th rowspan="2">C</th> </tr> <tr> <th colspan="3">A+B</th> </tr> <tr> <th rowspan="2">Length</th> <th rowspan="2">Width</th> <th rowspan="2">Size (mm)</th> <th>4.3"~7"</th> <th>7~10.1"</th> <th>>10.1"</th> <th rowspan="2">Acceptable</th> </tr> </thead> <tbody> <tr> <td>Ignore</td> <td>$W \leq 0.05$</td> <td></td> <td>Acceptable</td> <td>Acceptable</td> <td>Acceptable</td> </tr> <tr> <td>$1.0 < L \leq 5.0$</td> <td>$0.05 < W \leq 0.20$</td> <td></td> <td>4</td> <td>5</td> <td>6</td> </tr> <tr> <td>$L > 5.0$</td> <td>$W > 0.2$</td> <td></td> <td>0</td> <td>0</td> <td>0</td> </tr> </tbody> </table>	Zone		Acceptable Qty			C	A+B			Size(mm)		4.3"~7"	7~10.1"	>10.1"	Acceptable	$\Phi \leq 0.2$		Acceptable	Acceptable	Acceptable	$0.2 < \Phi \leq 0.5$		4	5	6	$\Phi > 0.5$		0	0	0	Zone		Acceptable Qty			C	A+B			Length	Width	Size (mm)	4.3"~7"	7~10.1"	>10.1"	Acceptable	Ignore	$W \leq 0.05$		Acceptable	Acceptable	Acceptable	$1.0 < L \leq 5.0$	$0.05 < W \leq 0.20$		4	5	6	$L > 5.0$	$W > 0.2$		0	0	0	Minor
		Zone			Acceptable Qty				C																																																										
				A+B																																																															
		Size(mm)		4.3"~7"	7~10.1"	>10.1"	Acceptable																																																												
$\Phi \leq 0.2$				Acceptable	Acceptable	Acceptable																																																													
$0.2 < \Phi \leq 0.5$		4	5	6																																																															
$\Phi > 0.5$		0	0	0																																																															
Zone		Acceptable Qty			C																																																														
		A+B																																																																	
Length	Width	Size (mm)	4.3"~7"	7~10.1"	>10.1"	Acceptable																																																													
			Ignore	$W \leq 0.05$			Acceptable	Acceptable	Acceptable																																																										
$1.0 < L \leq 5.0$	$0.05 < W \leq 0.20$		4	5	6																																																														
$L > 5.0$	$W > 0.2$		0	0	0																																																														
5	MURA	Using 3% ND filter, it's NG if it can be seen in R,G,B picture.	Minor																																																																
	White/Black dot (MURA)	Visible under: ND3%; $D \leq 0.15mm$, Acceptable; $0.15mm < D \leq 0.5mm$, $N \leq 4$; $D > 0.5mm$, Not allowable.																																																																	

6	Glass defect	<p>(i) Crack Cracks are not allowed.</p> 	Minor								
		<p>(ii) TFT chips on corner</p>  <table border="1" style="width: 100%; text-align: center;"> <thead> <tr> <th>X</th> <th>Y</th> <th>Z</th> <th>Acceptable</th> </tr> </thead> <tbody> <tr> <td>≤ 3.0</td> <td>≤ 3.0</td> <td>Not more than the thickness of glass</td> <td>$N \leq 3$</td> </tr> </tbody> </table> <p>Chips on the corner of terminal shall not be allowed to extend into the ITO pad or expose perimeter seal.</p>	X	Y	Z	Acceptable	≤ 3.0	≤ 3.0	Not more than the thickness of glass	$N \leq 3$	Minor
		X	Y	Z	Acceptable						
≤ 3.0	≤ 3.0	Not more than the thickness of glass	$N \leq 3$								
<p>(iii) Usual surface crack</p>  <table border="1" style="width: 100%; text-align: center;"> <thead> <tr> <th>X</th> <th>Y</th> <th>Z</th> <th>Acceptable</th> </tr> </thead> <tbody> <tr> <td>≤ 1.5</td> <td>≤ 1.5</td> <td>Not more than the thickness of glass</td> <td>$N \leq 4$</td> </tr> </tbody> </table> <p>It is only applicable to the upper glass of LCD.</p>	X	Y	Z	Acceptable	≤ 1.5	≤ 1.5	Not more than the thickness of glass	$N \leq 4$	Minor		
X	Y	Z	Acceptable								
≤ 1.5	≤ 1.5	Not more than the thickness of glass	$N \leq 4$								

10.6 Module Cosmetic Criteria

Item No.	Items to be inspected	Inspection Standard	Classification of defects
1	Difference in Spec.	Not allowable	Major
2	Pattern peeling	No substrate pattern peeling and floating	Major
3	Soldering defects	No soldering missing	Major
		No soldering bridge	Major
		No cold soldering	Minor
4	Resist flaw on PCB	Visible copper foil ($\Phi 0.5$ mm or more) on substrate pattern is not allowed	Minor
5	FPC gold finger	No dirt, breaking, oxidation lead to black	Major
6	Backlight plastic frame	No deformation, crack, breaking, backlight positioning column breaking, obvious nick.	Minor
7	Marking printing effect	No dark marking, incomplete, deformation lead to unable to judge	Minor
8	Accretion of metallic Foreign matter	No accretion of metallic foreign matter (Not exceed $\Phi 0.2$ mm)	Minor
9	Stain	No stain to spoil cosmetic badly	Minor
10	Plate discoloring	No plate fading, rusting and discoloring	Minor
11	1. Lead parts	a. Soldering side of PCB Solder to form a 'Filet' all around the lead. Solder should not hide the lead form perfectly.	Minor
		b. Components side(In case of 'Through Hole PCB') Solder to reach the Components side of PCB.	Minor
	2. Flat packages	Either 'Toe'(A) or 'Seal'(B)of the lead to be covered by "Filet". Lead form to be assume over Solder.	Minor
	3. Chips	$(3/2) H \geq h \geq (1/2) H$	Minor
4. Solder ball/Solder splash	a. The spacing between solder ball and the conductor or solder pad $h \geq 0.13$ mm. The diameter of solder ball $d \leq 0.15$ mm.	Minor	
	b. The quantity of solder balls or solder splashes isn't beyond 5 in 600 mm ² .	Minor	
	c. Solder balls/Solder splashes do not violate minimum electrical clearance.	Major	

