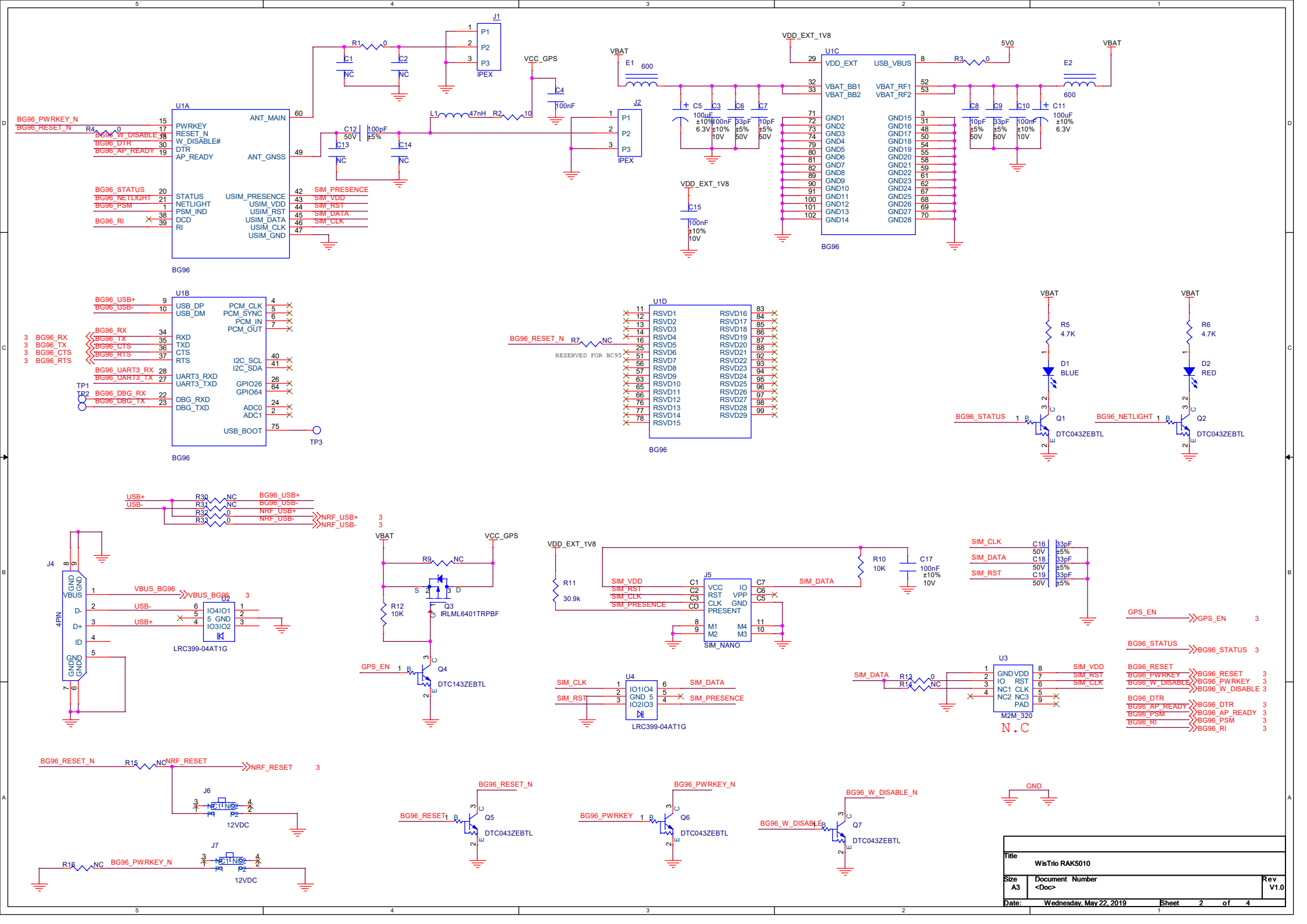
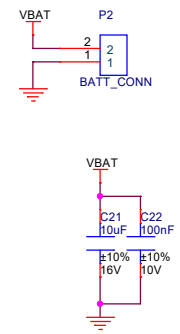
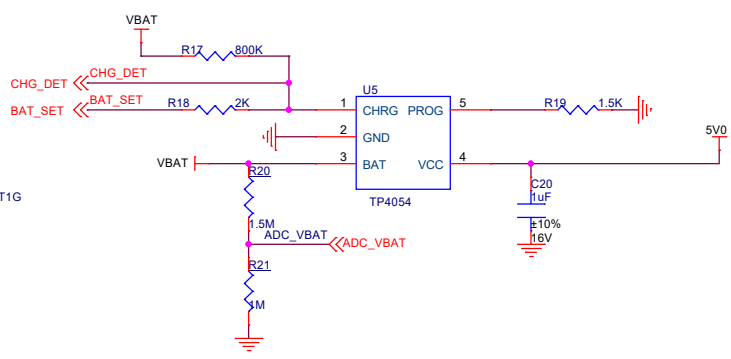
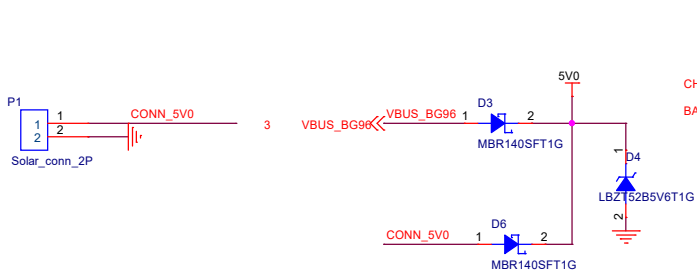


1, GPS should be 3-5V
 2, external interface is 1.8V

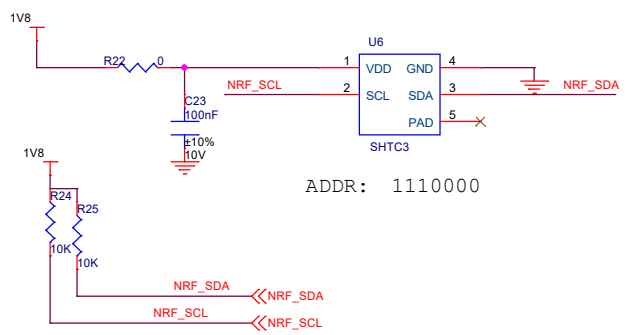
Title			
WisTrio-Cellular RAK5010			
Size	Document Number	Rev	
A3	<Doc>	V1.0	
Date:	Thursday, January 17, 2019	Sheet	1 of 4



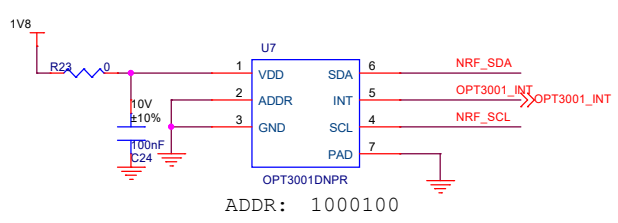
Title			
WisTrio RAK5010			
Size	Document	Number	Rev
A3	<Doc>		V1.0
Date:	Wednesday, May 22, 2019	Sheet	2 of 4



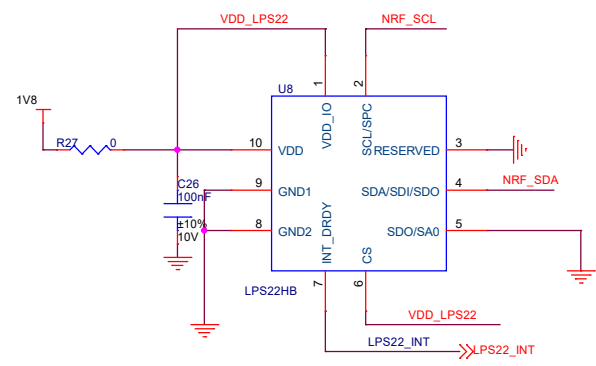
Humidity and Temperature Sensor



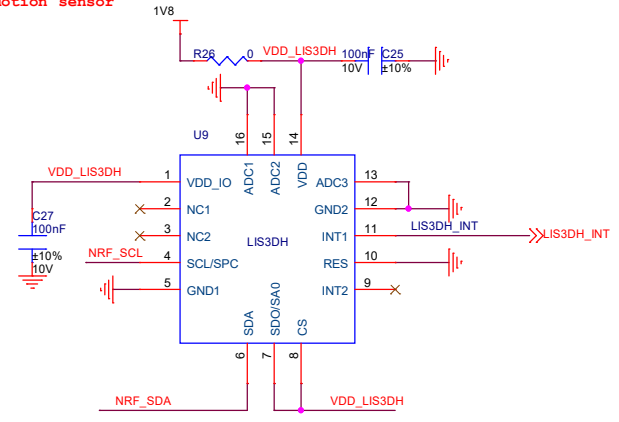
Ambient Light sensor



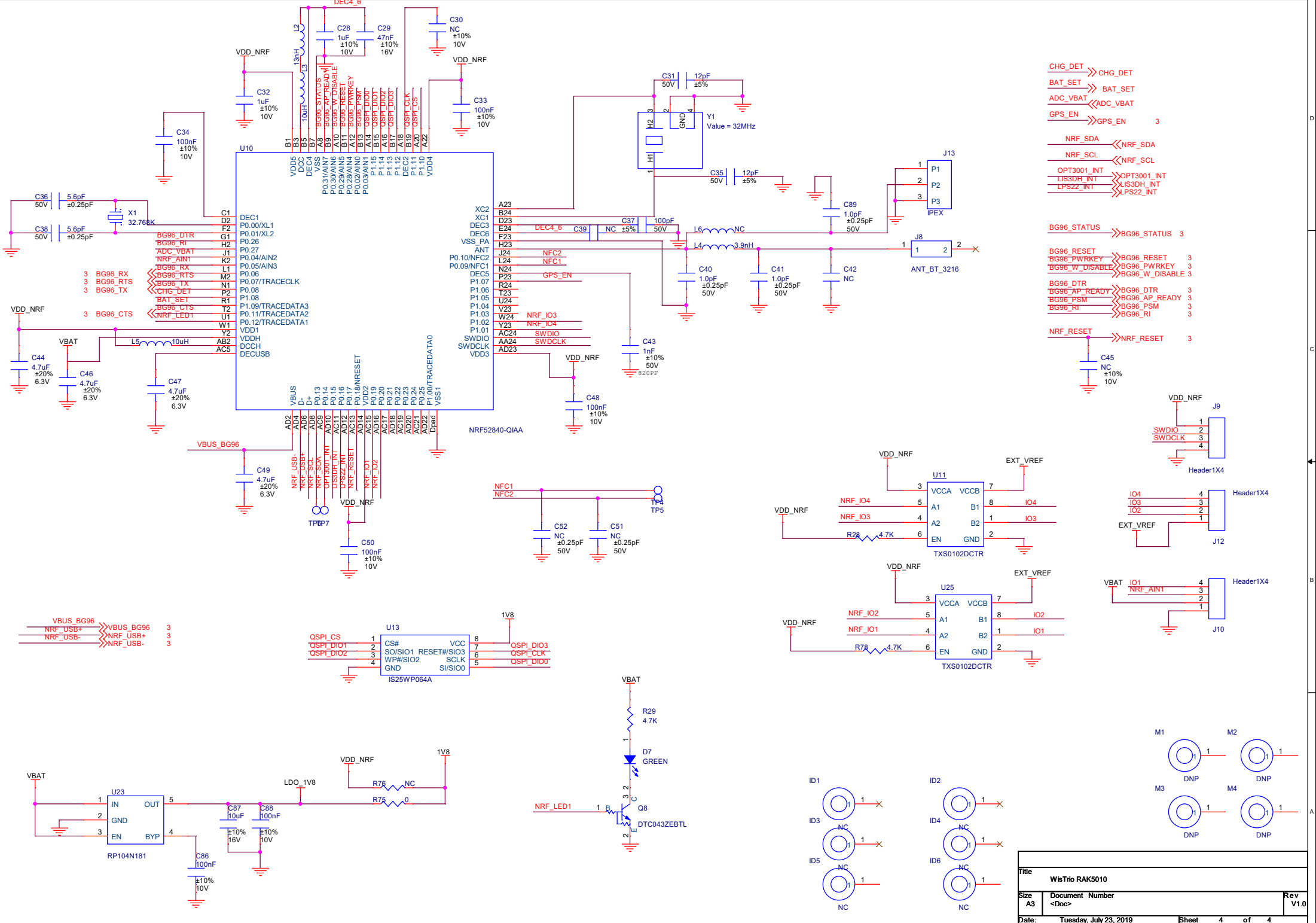
pressure sensor



Motion sensor



Title		WisTrio RAK5010
Size	Document Number	Rev
A3	<Doc>	V1.0
Date:	Wednesday, May 22, 2019	Sheet 3 of 4



- CHG_DET >> CHG_DET
- BAT_SET >> BAT_SET
- ADC_VBAT <<< ADC_VBAT
- GPS_EN >> GPS_EN 3
- NRF_SDA <<< NRF_SDA
- NRF_SCL <<< NRF_SCL
- OPT3001_INT >> OPT3001_INT
- LIS3DH_INT >> LIS3DH_INT
- LPS22_INT >> LPS22_INT
- BG96_STATUS >> BG96_STATUS 3
- BG96_RESET >> BG96_RESET 3
- BG96_PWRKEY >> BG96_PWRKEY 3
- BG96_W_DISABLE >> BG96_W_DISABLE 3
- BG96_DTR >> BG96_DTR 3
- BG96_AP_READY >> BG96_AP_READY 3
- BG96_PSM >> BG96_PSM 3
- BG96_RI >> BG96_RI 3
- NRF_RESET >> NRF_RESET 3

- VBUS_BG96 >> VBUS_BG96 3
- NRF_USB+ >> NRF_USB+ 3
- NRF_USB- >> NRF_USB- 3

Title		WsTrio RAK5010	
Size	A3	Document Number	<Doc>
Date:	Tuesday, July 23, 2019	Sheet	4 of 4
		Rev	V1.0