

TC040C12U00

4.0 Inches, 480*RGB*480, 16.7M Colors, IPS screen, Wire-Controller



● Display

Item	Parameter	Description
Color	16.7M (16777216) colors	24 bit color 8R8G8B
Active Area(A.A.)	71.86mm (W) *67.96mm (H)	480*480
Resolution	480 * 480	Support 0°/90°/180°/270°rotated display
Backlight	LED	≥10000H(Continuous working with maximum brightness, time of brightness halves)
Brightness	250nit	100 levels adjustment(It's not recommend to set brightness to 1%~30% of the maximum,which may lead a flicker)

Note: You can use dynamic screen saver wallpapers to avoid afterimages caused by fixed page display for a long time.

● Voltage & Current

Item	Condition	Min	Typ.	Max	Unit
Power Voltage	-	8	12	36	V
Operation Current	VCC = +12V, Backlight on	-	100	-	mA
	VCC = +12V, Backlight off	-	40	-	mA

● Reliability Test

Item	Condition	Min	Typ.	Max	Unit
Working Temperature	60%RH at 12V Voltage	-20	25	70	℃
Storage Temperature	-	-30	25	80	℃
Working Humidity	25℃	0%	60%	90%	RH
Protective Paint	-	-	None	-	-

● Interface

Item	Condition	Min	Typ.	Max	Unit
Baud Rate	User Set	3150	115200	3225600	bps
(V_AB)	Output 1	2.5	5.0	-	V
	Output 0	-	-5.0	-2.5	V
(V_AB)	Input 1	0	2.5	-	V
	Input 0	-	-2.5	-0.2	V
Interface	RS485 (UART2 & UART5)				
Socket	4PIN_2.0mm				
USB	None				
SD Slot	Yes (SDHC/FAT32 file format)				

- **Memory**

Item	Typ.	Features	Typ.	Unit	Description
FLASH (TA/DGUS II)	16Mbytes	Space of Font	4-12	Mbytes	A single font of 256Kbytes, store font, icon libraries, and other binary files
		Picture Storage (.ICL file)	12-4	Mbytes	JPEG format (Picture quantity relate to JPEG size, size of a single JPEG image file should not exceed 768 Kbytes)
RAM (DGUS II)	128Kbytes	Variable Storage Space	/	/	Data is not saved when power down
Nor Flash (DGUS II)	320Kbytes	User database	/	/	Data is saved when power down

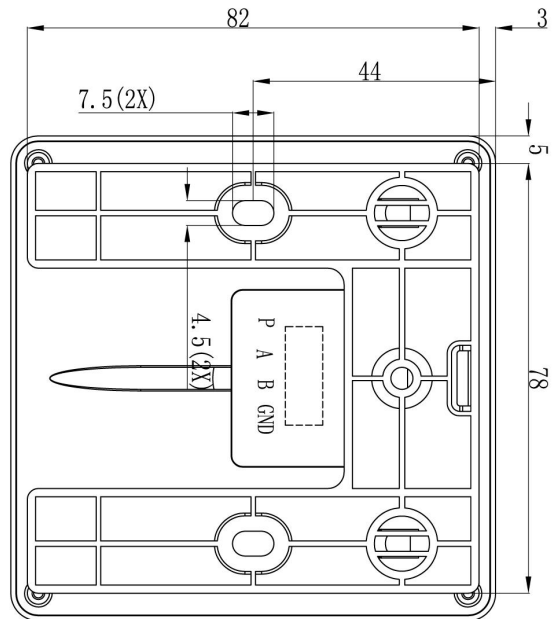
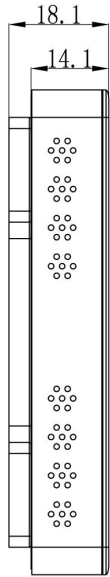
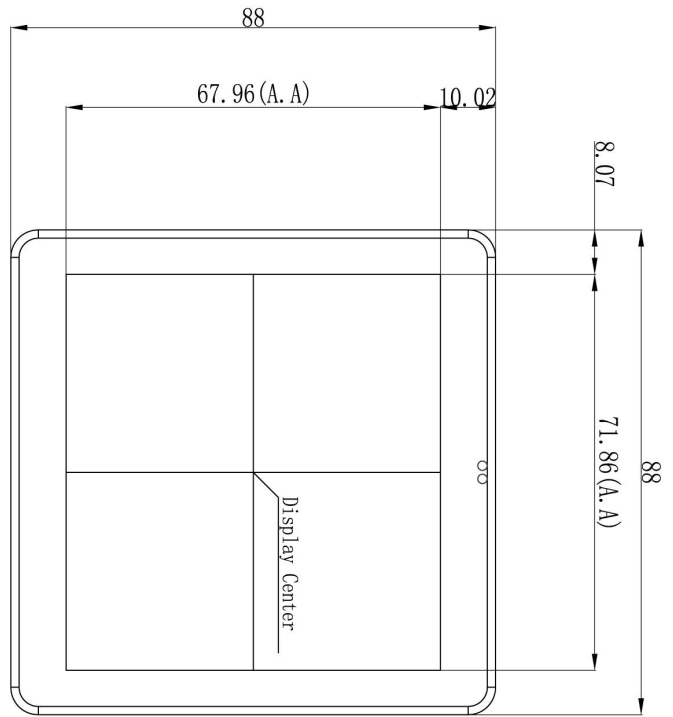
- **UI & Peripheral**

UI & Peripherals	
UI Version	TA/ DGUS II (DGUS II pre-installed)
Peripherals	Capacitive touch screen, Built-in Speaker

- **Packing Capacity & Dimension**

Dimension				
Dimension	88.0 mm(W) * 88.0mm (H) * 18.13 (T)mm			
Net Weight	131 g			
Packing Capacity				
Model	Size	Layer	Quantity/Layer	Quantity(Pcs)
Carton1:	220mm(L)*160mm(W)*47mm (H)	1	1	1
Carton2:	250mm(L)*200mm(W)*80mm (H)	2	2	4
Carton3:	320mm(L)*270mm(W)*80mm (H)	2	4	8
Carton4:	450mm(L)*350mm(W)*300mm(H)	-	-	-
Carton5:	600mm(L)*450mm(W)*300mm(H)	1	56	56

Disclaimer: The product design is subject to alternation and improvement without prior notice.



Pin	Definition	Type	Description
GND	4	P	GND
B	3	485-	485-
A	2	485+	485+
P	1	P	Power Input

Unmarked Tolerance is +/-0.3mm
Active area is marked in Dash lines

Model	TC040C12U00			DWIN Technologies		
Drawing	A 4	Drawn	DWIN	Date		
Scale		Review		Date		
Unit	MM	Approve		Date		

Record of Revision

Version	Revise Date	Content	Editor
00	2023-02-24	First Edition	YML
01	2023-08-17	Update Installation Schmatic	YML

Please contact us if you have any questions about the use of this document or our products, or if you would like to know the latest information about our products:

Customer service Tel: +86-400-018-9008

Customer service E-mail: dwinhmi@dwin.com.cn

Website: www.dwin-global.com

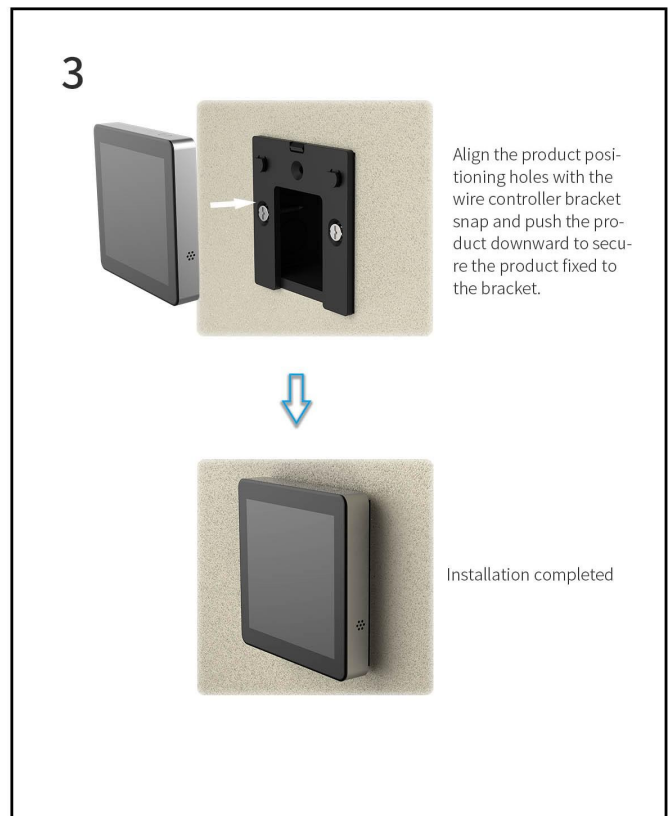
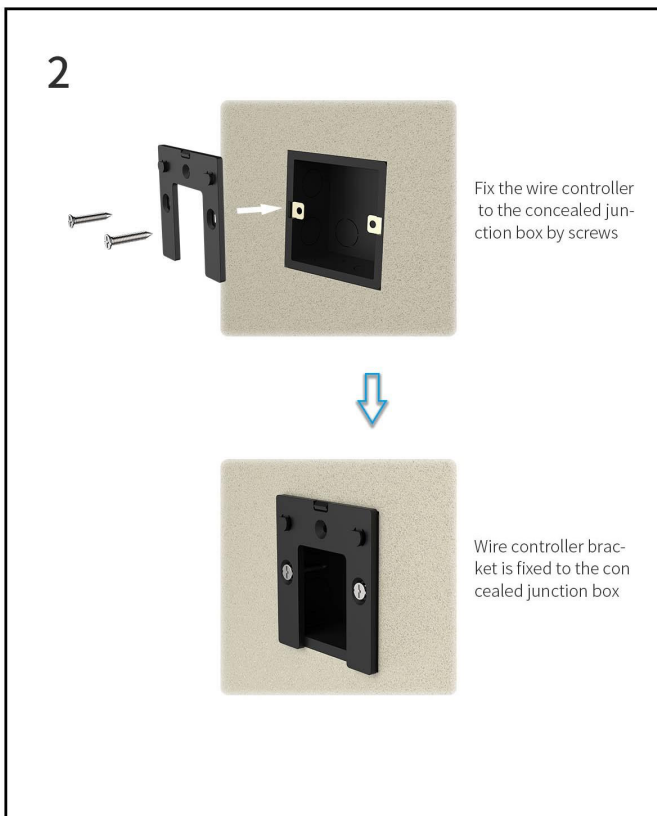
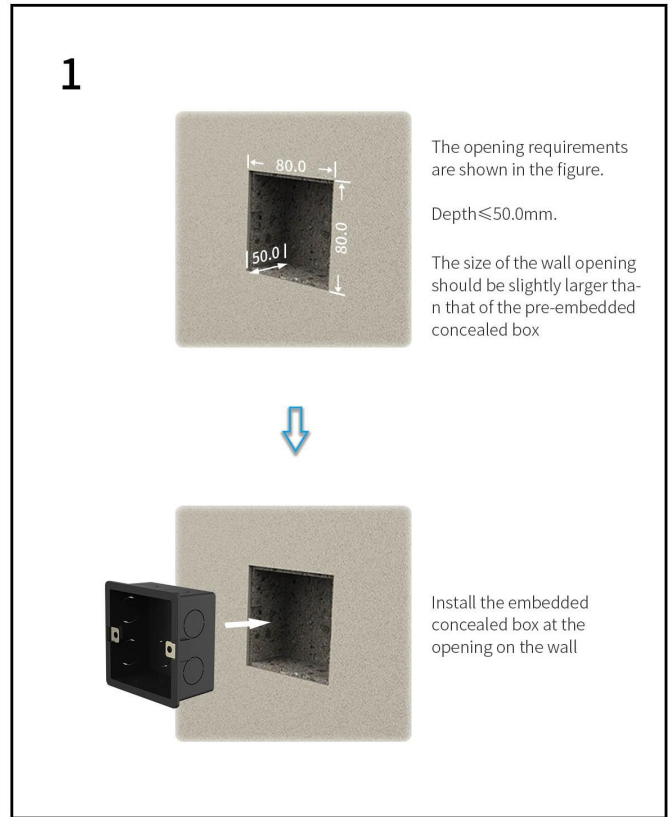
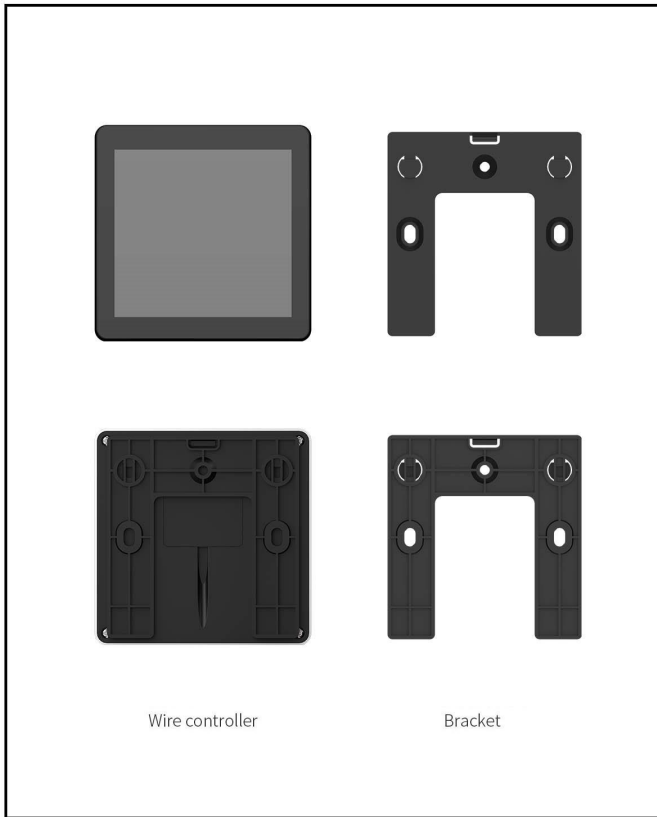
DWIN Developer Forum: <https://forums.dwin-global.com/index.php/forums>

Thank you all for continuous support of DWIN, and your approval is the driving force of our progress!

DWIN Technology Technical Document

TC040C12W00

Installation Schematic



TC040C12W00

Installation Schematic

